



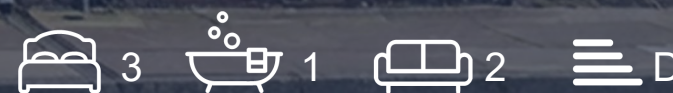
**FARROW**  
ESTATE AGENTS



  
**FARROW**  
ESTATE AGENTS

229 Weelsby Street, Grimsby, DN32 7PF

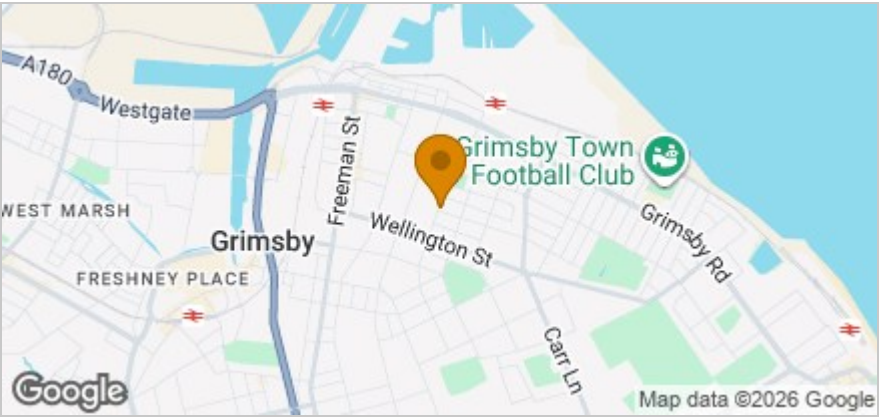
Asking price £69,950



Floor Plan



Area Map



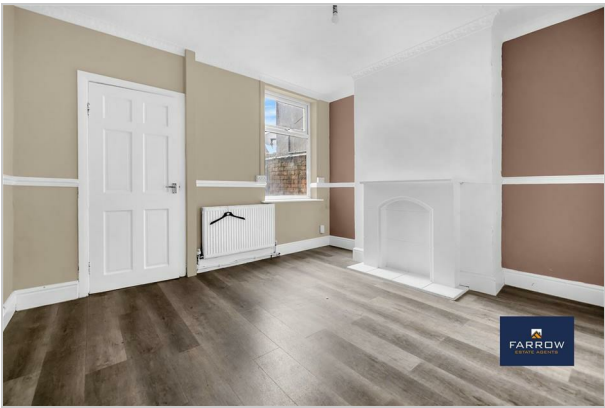
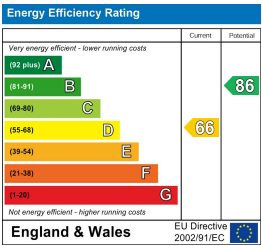
Accommodation

- Perfect First Home / Investment
- Chain Free Vendor Wanting A Quick Sale
- Gas Central Heating & Double Glazing
- Three Good Sized Double Bedrooms
- Short Walk To Local Amenities
- Easy Access To A180 Motorway
- Modern Fitted Kitchen With Ample Space For Appliances
- Popular (DN32) Location
- Affordable Home
- Easy Access To Cleethorpes & Grimsby Town Centres

Viewing

Please contact our Farrow Estate Agents Office on 01472 355864 if you wish to arrange a viewing appointment for this property or require further information.

Energy Efficiency Graph



These particulars, whilst believed to be accurate are set out as a general outline only for guidance and do not constitute any part of an offer or contract. Intending purchasers should not rely on them as statements of representation of fact, but must satisfy themselves by inspection or otherwise as to their accuracy. No person in this firm's employment has the authority to make or give any representation or warranty in respect of the property.